



---

**GFClock Yasa Persada**

Jakarta, 6 Desember 2021

**Valued Customers**  
Indonesia

**Dengan Hormat,**

Bersama ini kita sampaikan informasi Spare Parts Mesin Jam Tower Clock.

Tower clock bisa dibuat Independent tanpa adanya Master Clock control akan ini lebih hemat, dimana pengontrolan Jam hanya dengan Dua Tombol.

Jika menghendaki Master Clock control perlu tambahan Biaya Hardware Master Control tersebut yang fungsinya untuk mengatur sinkronisasi beberapa Jam.

Hormat Kami,

**GFClock Yasapersada**  
Jl. Pejaten Raya No.12A Pejaten Barat, Pasar Minggu  
Jakarta Selatan 12510

Hp. 0818-8020 45 | WA. 0821-146117 32



**Contents**

**MESIN JAM BESAR – GIANT CLOCK MOVEMENT ..... 3**

    PRICE GFA SERIES FOR 1 – 6 METER DIAMETER ..... 3

    SPECIFICATIONS GFA SERIES FOR 1 – 6 METER DIAMETER ..... 4

**WIRING INSTALLATION..... 8**

**MASTER CONTROL ..... 9**

    GFC-1200E ..... 9

    GFL-200P MASTER CLOCK FOR WALL MOUNTING ..... 10

**GFCLOCK YASAPERSADA ..... 11**

## Mesin Jam Besar – Giant Clock Movement

### Price GFA Series for 1 – 6 Meter Diameter

MODEL	MODEL DESCRIPTIONS	PRICE
<b>Independent movement, time adjusted by pressing buttons on movement</b>		
GFA12SFP	For dial size up to 1.2m (ABS outer case)	
GFA12SHP	For dial size up to 1.2m, support LED illumination on hands (ABS outer case)	
GFA25LFP	For dial size from 1.3m to 2.5m, with extended long shafts	
GFA25NFP	For dial size from 1.3m to 2.5m	
GFA25NHP	For dial size from 1.3m to 2.5m, support LED illumination on hand	
GFA40LFP	For dial size from 2.6m to 4.0m, with extended long shafts	
GFA40LHP	For dial size from 2.6m to 4.0m, with extended long shafts, support LED illumination on hands	
GFA40NFP	For dial size from 2.6m to 4.0m	
GFA40NHP	For dial size from 2.6m to 4.0m, support LED illumination on hands	
GFA60LFP	For dial size from 4.0m to 6.0m, with extended long shafts	
GFA60LHP	For dial size from 4.0m to 6.0m, with extended long shafts, support LED illumination on hands	
GFA60NFP	For dial size from 4.0m to 6.0m 1	
GFA60NHP	For dial size from 4.0m to 6.0m, support LED illumination on hands	
<b>Secondary movement, time synchronized with master clock</b>		
GFA60NHS	For dial size from 4.1m to 6.0m, support LED illumination on hands	
GFA60NFS	For dial size from 4.1m to 6.0m	
GFA60LHS	For dial size from 4.1m to 6.0m, with extended long shafts, support LED illumination on hands	
GFA60LFS	For dial size from 4.1m to 6.0m, with extended long shafts	
GFA40NHS	For dial size from 2.6m to 4.0m, support LED illumination on hands	
GFA40NFS	For dial size from 2.6m to 4.0m	
GFA40LHS	For dial size from 2.6m to 4.0m, with extended long shafts, support LED illumination on hands	
GFA40LFS	For dial size from 2.6m to 4.0m, with extended long shafts	
GFA25NHS	For dial size from 1.3m to 2.5m, support LED illumination on hands	
GFA25NFS	For dial size from 1.3m to 2.5m	
GFA25LFS	For dial size from 1.3m to 2.5m, with extended long shafts	
GFA12SHS	For dial size up to 1.2m, support LED illumination on hands (ABS outer case)	
GFA12SFS	For dial size up to 1.2m (ABS outer case)	
<b>Independent movement with adjusting buttons, and can also be synchronized with master clock</b>		
GFA12SFB	For dial size up to 1.2m (ABS outer case)	
GFA12SHB	For dial size up to 1.2m, support LED illumination on hands (ABS outer case)	
GFA25LFB	For dial size from 1.3m to 2.5m, with extended long shafts	

---

## MESIN JAM BESAR – MESIN JAM OUTDOOR

GFA25NFB	For dial size from 1.3m to 2.5m	
GFA25NHB	For dial size from 1.3m to 2.5m, support LED illumination on hands	
GFA40LFB	For dial size from 2.6m to 4.0m, with extended long shafts 1'480.-	
GFA40LHB	For dial size from 2.6m to 4.0m, with extended long shafts, support LED illumination on hands	
GFA40NFB	For dial size from 2.6m to 4.0m	
GFA40NHB	For dial size from 2.6m to 4.0m, support LED illumination on hands	
GFA60LFB	For dial size from 4.1m to 6.0m, with extended long shafts	
GFA60LHB	For dial size from 4.1m to 6.0m, with extended long shafts, support LED illumination on hands	
GFA60NFB	For dial size from 4.1m to 6.0m	
GFA60NHB	For dial size from 4.1m to 6.0m, support LED illumination on hands	

### Specifications GFA Series for 1 – 6 Meter Diameter

Two hands: Hour and Minute



**Available for 1 - 6 Meter diameter of Dial**

- Micro-processor based self-setting movement
- Ideal for open-air tower clock system
- All metal fabric with stepping motor
- Remote control enabled
- Compact design with multiple functions

### **FEATURES**

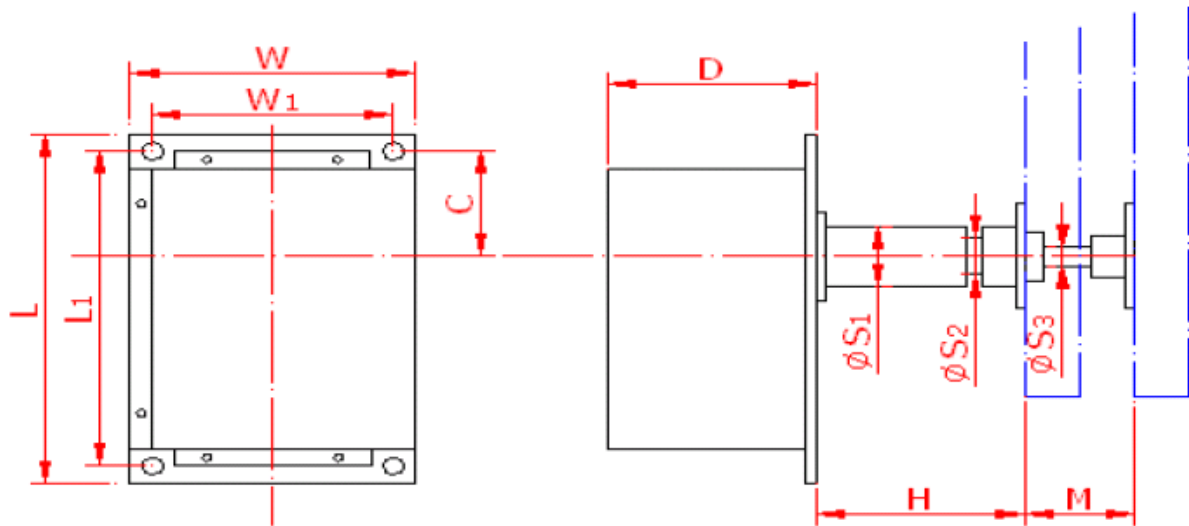
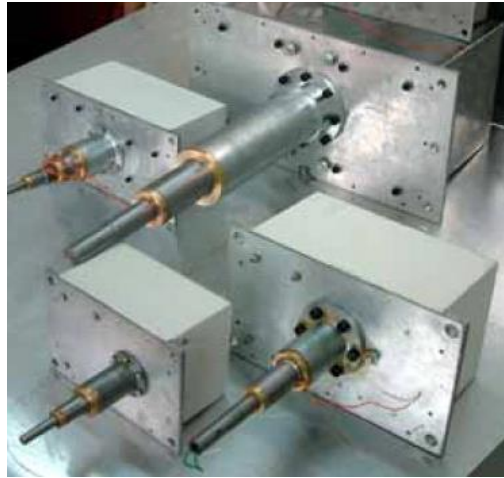
Microprocessor based open-air tower clock movement  
Suitable for open-air dial diameter from 1.2m to 12m  
Self-setting with master clock upon power recovery from failure  
Controlled & synchronized by master clock or PC connected  
Operation reservation upon power failure  
High efficiency with low power consumption  
Applicable with or w/o master clock and UT tower clock software

---

## MESIN JAM BESAR – MESIN JAM OUTDOOR

<b>OUTDOOR-USE DESIGN</b>	:	- Entirely metal fabric from internal parts to outer case ( GFA12 is exceptional with ABS outer case) - Dust-proof, anti-rust, and weather-resistant
<b>LOW CONSUMPTION</b>	:	- Lower power consumption by 50%
<b>HIGH EFFICIENCY</b>	:	- Cylinder & gears design enables high efficiency with low abrasion
<b>SELF-SETTING</b>	:	- Automatically synchronized with master clock
<b>TIME RESERVATION</b>	:	- 3 months' operation reservation enables auto correction to master clock's time on power recovery from a mains power failure
<b>WIRING</b>	:	- Ordinary double-twisted pair wire
<b>INTERFACE</b>	:	- RS485 output & input
<b>REMOTE OPERATION</b>	:	- Central supervised and controlled with master clock or PC - No operation on movement needed - Wiring distance to master clock or PC up to 1200m - Feedback running status to master clock or PC
<b>TIME ACCURACY</b>	:	- 0.3 s/d at 25° (independent)
<b>HANDS ILLUMINATION</b>	:	- Hollow shafts design enables LED
<b>OTHER PARAMETER</b>	:	- Power supply DC 12V - Shafts Hour & minute - Working Temp. -30 – 85° - Humidity 0 – 95%

DIMENSIONS



MODEL	W	W1	L	L1	D	C	S1	S2	S3	H	M
GFA12S	67	-	99	-	50	27	15	7	-	25	15
GFA25N	130	110	200	180	95	60	34	21	11	95	50
GFA25L	130	110	200	180	95	60	34	21	11	230	50
GFA40N	150	130	230	210	100	68	58	33	16	124	65
GFA40L	150	130	230	210	100	68	58	33	16	250	65
GFA60N	200	180	300	280	159	92	64	39	22	154	95
GFA60L	200	180	300	280	159	92	64	39	22	270	95



## GFA Series

### COMPARISON & SELECTION TABLE OF GFA TOWER CLOCK MOVEMENT

MODEL	Dial Size (cm)	Dial Thickness (mm)	Hour Shaft Length (mm)	Hands Illumination	Operation	Buttons for Adjusting Hands
GFA12SFP	~ 120	~ 10	25	-	w/o Master	**
GFA12SFS	~ 120	~ 10	25	-	with Master	-
GFA12SFB	~ 120	~ 10	25	-	with or w/o Master	**
GFA12SHP	~ 120	~ 10	25	Enabled	w/o Master	**
GFA12SHS	~ 120	~ 10	25	Enabled	with Master	-
GFA12SHB	~ 120	~ 10	25	Enabled	with or w/o Master	**
GFA25NFP	120 ~ 250	~ 60	90	-	w/o Master	**
GFA25NFS	120 ~ 250	~ 60	90	-	with Master	-
GFA25NFB	120 ~ 250	~ 60	90	-	with or w/o Master	**
GFA25NHP	120 ~ 250	~ 60	90	Enabled	w/o Master	**
GFA25NHS	120 ~ 250	~ 60	90	Enabled	with Master	-
GFA25NHB	120 ~ 250	~ 60	90	Enabled	with or w/o Master	**
GFA25LFP	120 ~ 250	~ 200	230	-	w/o Master	**
GFA25LFS	120 ~ 250	~ 200	230	-	with Master	-
GFA25LFB	120 ~ 250	~ 200	230	-	with or w/o Master	**
GFA40NFP	250 ~ 400	~ 60	115	-	w/o Master	**
GFA40NFS	250 ~ 400	~ 60	115	-	with Master	-
GFA40NFB	250 ~ 400	~ 60	115	-	with or w/o Master	**
GFA40NHP	250 ~ 400	~ 60	115	Enabled	w/o Master	**
GFA40NHS	250 ~ 400	~ 60	115	Enabled	with Master	-
GFA40NHB	250 ~ 400	~ 60	115	Enabled	with or w/o Master	**
GFA40LFP	250 ~ 400	~ 200	263	-	w/o Master	**
GFA40LFS	250 ~ 400	~ 200	263	-	with Master	-
GFA40LFB	250 ~ 400	~ 200	263	-	with or w/o Master	**
GFA60NFP	400 ~ 600	~ 60	154	-	w/o Master	**
GFA60NFS	400 ~ 600	~ 60	154	-	with Master	-
GFA60NFB	400 ~ 600	~ 60	154	-	with or w/o Master	**
GFA60NHP	400 ~ 600	~ 60	154	Enabled	w/o Master	**
GFA60NHS	400 ~ 600	~ 60	154	Enabled	with Master	-
GFA60NHB	400 ~ 600	~ 60	154	Enabled	with or w/o Master	**
GFA60LFP	400 ~ 600	~ 200	270	-	w/o Master	**
GFA60LFS	400 ~ 600	~ 200	270	-	with Master	-
GFA60LFB	400 ~ 600	~ 200	270	-	with or w/o Master	**

Note:

**GFA25NFB** adalah pilihan yang tepat dalam penawaran ini untuk support spesifikasi yang diinginkan, antara lain:

1. Diameter 3.0 meter, and working with Master clock and four slave clock
2. Support illumination at night of Hands

## Wiring Installation

### GFA Series for Two Hands

Bangunan Menara oleh Pembeli harus dibuat seperti pada gambar dibawah ini:

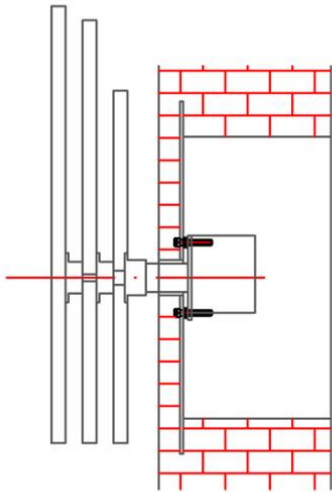


Fig. 1

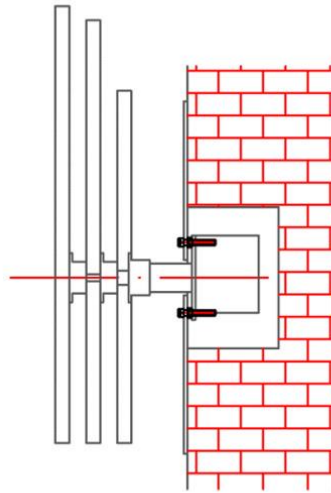


Fig. 2

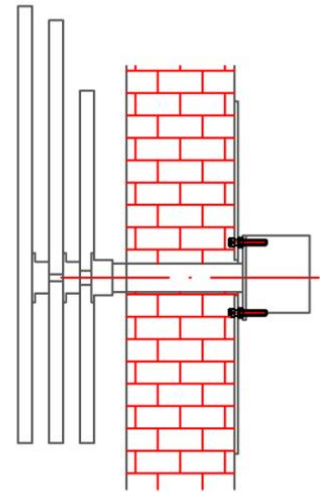


Fig. 3

Remark: in Fig. 3, movement with extended shaft is required

**Building Clock - Installation**



## Master Control

### GFC-1200e

Master Control dapat digunakan untuk melakukan sinkronisasi waktu dari ke empat face mesin jam sehingga waktu tercatat dari masing-masing mesin jam akan sama, dan mempunyai fungsi RTC = Real Time Clock yang berguna untuk menyimpan informasi waktu jika sumber Listrik dalam keadaan mati (informasi waktu tersebut akan tersimpan selama 6 bulan, setelahnya bisa dilakukan reset ulang untuk kembali dapat menyimpan informasi waktu)

Master Clock ini juga mempunyai fungsi illumination sebagai pengontrol lampu akan menyala pada malam hari, auto correction time jika listrik PLN mati dan akan melakukan recovery waktu secara otomatis kepada masing-masing secondary clocks

Berikut adalah Master Control dalam penawaran ini adalah, sbb:

### Master Control / Master Clock



Optional Functions:

1. Master Clock System
2. illumination light at night
3. Auto correction time
4. Control up to 120 meter cable


with Hours Striking Module + Speaker and Amplifier are support Melody/Chime

Note:

**Master Control** jenis ini adalah pilihan yang tepat dalam penawaran ini untuk support spesifikasi yang diinginkan, antara lain:

1. Tower Clock 4 Face dan masing-masing mesin jam akan saling tersinkronisasi waktunya
2. included RTC = Real Time Control (menyimpan informasi waktu sampai dengan 6 bulan selama Listrik Mati, dan bisa di reset kembali)
3. Auto correction Time, jika Listrik Mati akan melakukan perbaikan waktu secara otomatis pada saat Listrik kembali Hidup
4. Support illumination control, dan bias di set untuk interval waktu yang diinginkan

GFL-200P Master clock for wall mounting

MODEL	Model / Descriptions
	<ul style="list-style-type: none"><li>- Micro-processor based</li><li>- Control distance 1200m</li><li>- 220vac power supply</li><li>- Internal real time clock</li><li>- Serial time code output</li><li>- Up to 99 secondary clocks in one system</li><li>- Adjusting Hands one by one</li><li>- 2.3"/1.5" red LED digit display HH:MM ss.</li><li>- Adjust secondary clock hands by pressing buttons</li></ul>
GFL-200	2.3"/1.5" red LED digit display HH:MM SS.
GFL-200P	2.3"/1.5" red LED digit display HH:MM SS. Adjust secondary clock hands by pressing buttons

